

## Stromal Cell-Derived Factor 1 $\alpha$ (SDF-1 $\alpha$ , CXCL12) labelled $^{15}\text{N}$ and $^{13}\text{C}$ for NMR

**Product Number:** HM-160; HM-161

**Expiration date:** (depends on batch)

**Batch number:** (each batch has a specific tracking number)

**Batch concentration:** (depends on batch) after addition of (depends on batch)  $\mu\text{L}$  of distilled water.

### **Product Description:**

Recombinant Stromal Cell-Derived Factor 1 $\alpha$  (SDF-1 $\alpha$ ) is a 8 kDa chemokine labelled with isotope  $^{15}\text{N}$  and  $^{13}\text{C}$ .

This protein is suitable for NMR studies.

This product corresponds to the human sequence and is produced in *E.coli*.

### **Reagent format:**

**SDF-1 $\alpha$  for NMR correspond to the human sequence.**

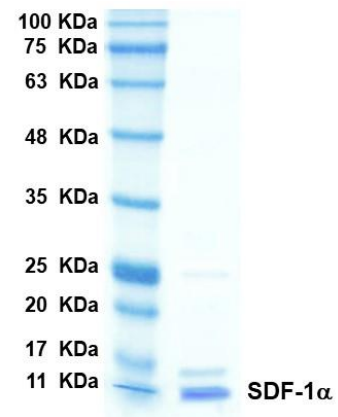
SDF-1 $\alpha$  for NMR is lyophilized from DPBS without Ca and Mg.

**Storage:** 2-8 $^{\circ}\text{C}$ . The protein once resuspended can be stored frozen (-20 $^{\circ}\text{C}$ ).

**This product is for research use only**

```
MKPVSLSYRCPCRFFESHVARANVKHLKILNT  
PNCALQIVARLKNNNRQVCIDPKLKWIQEYLE  
KALNK
```

**Fig. 1.** SDF-1 $\alpha$  sequence



**Fig. 2.** SDS-PAGE with Coomassie Blue staining